

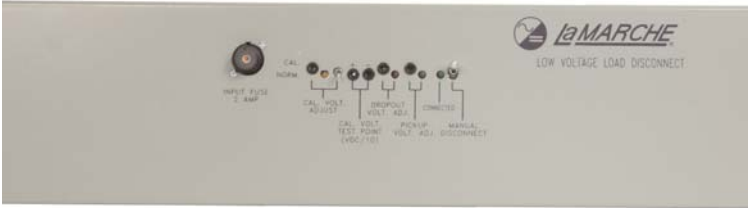


La MARCHÉ

ISO 9001:2000 CERTIFIED

LVL D SERIES

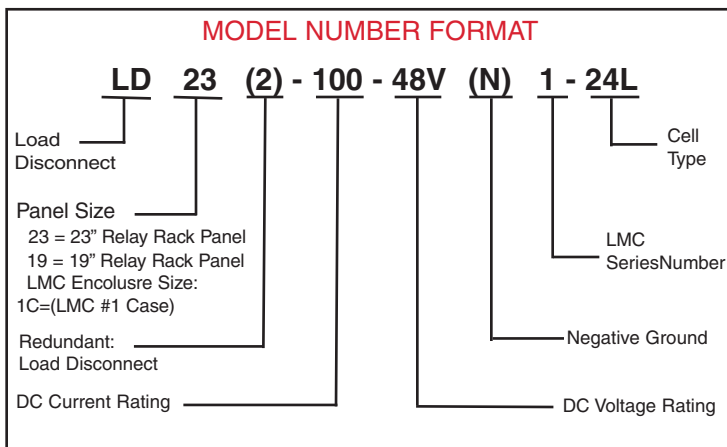
LOW VOLTAGE LOAD DISCONNECT PANEL



MODEL LVL D SERIES LOW VOLTAGE LOAD DISCONNECT PANEL

The La Marche Low Voltage Load Disconnect (LVL D) panels automatically disconnect the DC load from the battery by means of a heavy-duty contactor. If the battery voltage drops below the preset level, a drop-out LED indicator on the front panel will illuminate and an alarm relay will de-energize, thus causing the contacts to change state. The load is reconnected automatically when the battery voltage returns to the desired voltage.

The calibration mode allows adjustments to the drop-out and pull-in set points on a live system without disturbing the system voltage or the load.



Standard Features

- Front access mounted test points, controls, fuse and LED's
- Field adjustable drop out and pick up voltages
- Manual disconnect switch with locking toggle lever
- Calibration Mode
- LED indicators for:
 - Load Connected
 - Calibration Voltage Adjust
 - Pick Up Voltage Adjust
- Two sets of form "C" low voltage alarm contacts
- Finish – ANSI-61 grey paint
- Coil of DC contactor fuse protected

Optional Features

- Enclosed wall mounted low voltage load disconnects. Consult the factory for details.
- Special paint finishes

Dimensions

- Height

50-400 amps	5.250 inches (3RU's)
600-1200 amps	8.750 inches (5RU's)
- Width
19 or 23 inches wide Relay Rack Panels
- Weight of panel mounted low voltage load disconnects (approx.)

50-100 amps	5 lbs.
200-400 amps	8 lbs.
600-800 amps	10 lbs.
1200 amps	15 lbs.

Voltage and Current Ratings

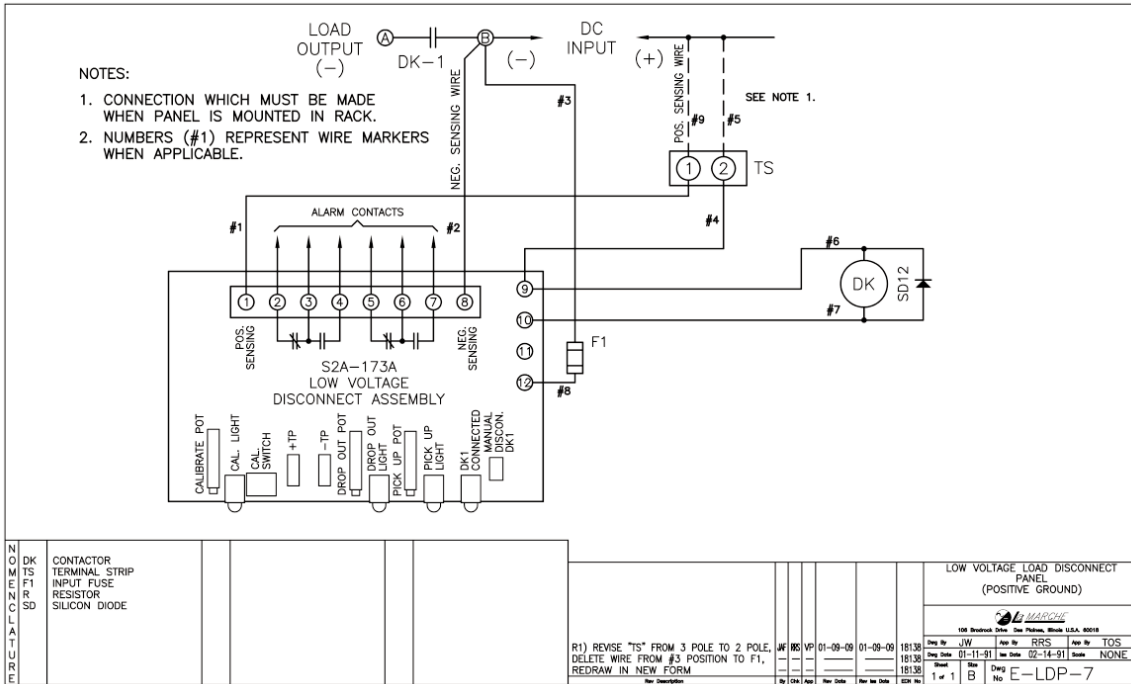
- 12, 24, or 48 volts DC ratings available. Must indicate negative common (return) as part of model number format when applicable. See model format for details.
- DC current ratings available: 50-1200 amps

MODEL LD SERIES

Low Voltage Load Disconnect Panel

Product Bulletin: Model LD Series

POSITIVE GROUND LOW VOLTAGE LOAD DISCONNECT PANEL



NEGATIVE GROUND LOW VOLTAGE LOAD DISCONNECT PANEL

