



LaMARCHE[®]

La Marche Manufacturing Company | www.lamarchemfg.com

LT12 PRO SNMP

Power Inverter (Web and SNMP
Management)

Installation and Operation Manual

This manual is subject to change without notice. You may obtain the newest version of the manual at www.lamarchemfg.com

Table of Contents

Table of Contents	i
Table of Figures.....	i
1.0 Introduction	1
1.1 Features	1
2.0 Initial Setup.....	1
3.0 Web Management.....	2
4.0 SNMP Management.....	5
4.2 Load MIB modules in MIB Browser	5
Appendix A: Document Control and Revision History	6

Table of Figures

Figure 1 - LTI2 PRO Web and SNMP Management Deployment Diagram	1
Figure 2 - "MConfig.exe" User Interface	2
Figure 3 - Web Login Interface	3
Figure 4 - Status Interface	3
Figure 5 - IP Option Interface.....	3
Figure 6 - COM Option Interface	4
Figure 7 - Password Interface.....	4
Figure 8 - Reset Interface	5

1.0 Introduction

LIT2 PRO has built-in web and SNMP Management capabilities. It provides functionality to view system status and set system configuration data either with internet explorer or MIB browser.

1.1 Features

1. Monitor system data and configure the system remotely by the network
2. Web Management with built-in authentication. Username and Password can be changed by User
3. Support SNMP V1, V2C, V3
4. 10M/100M based Ethernet interface
5. Flexible network deployment

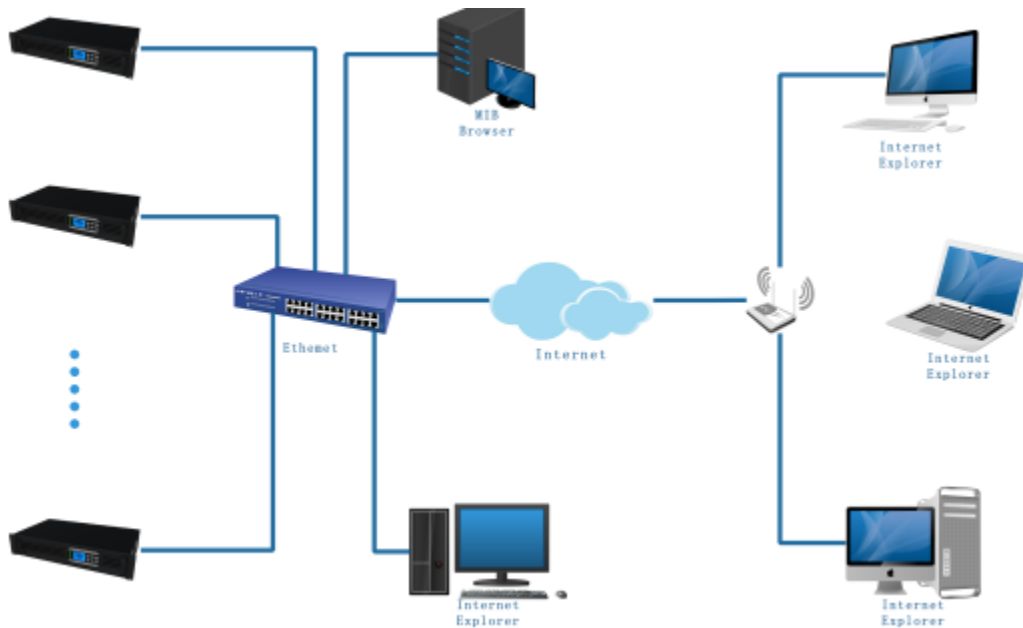


Figure 1 - LTI2 PRO Web and SNMP Management Deployment Diagram

2.0 Initial Setup

The IP address, subnet mask, and default gateway address should be set up correctly to enable network management to work. So, when these parameters don't match your network (e.g. the first installation), then you should use the windows application "MConfig.exe".

MConfig.exe can be Download from a CD drive provided with LTI2 PRO Inverter.

Click on the button "Search", wait for a while, all Setmini Ethernet address will be displayed. Select the Ethernet address which you want to configure, fill the correct IP address, gateway IP address, subnet mask IP address, then click on button "Set". If the status displays "Set Successfully", then the corresponding LTI2 PRO's IP address is OK.

Please note that the IP addresses of the PC and LTI2 PRO should be in the same subnet. If there is more than one network interface on your PC, you should disable irrelevant interface to prevent troubles.

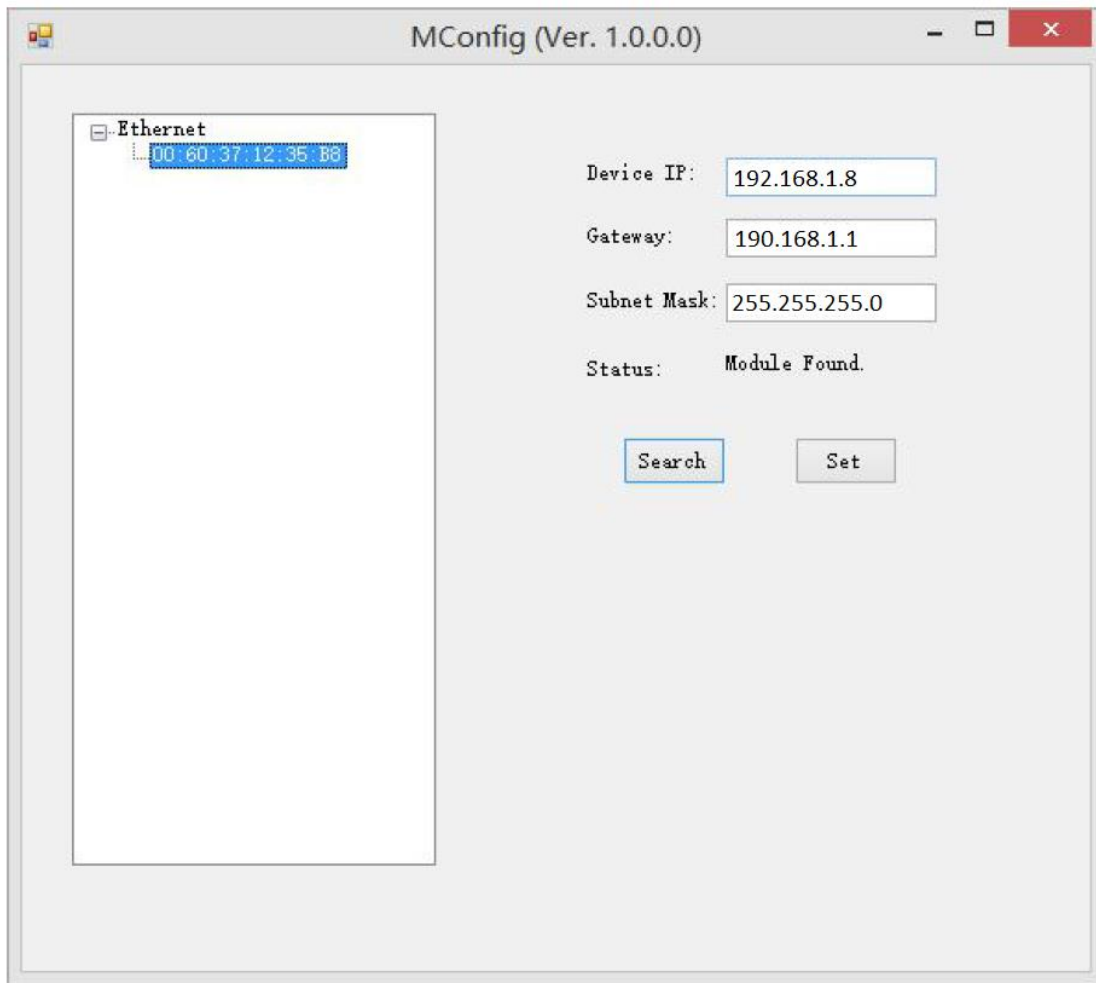


Figure 2 - "MConfig.exe" User Interface

3.0 Web Management

In the internet explorer address bar, input "http://**IP address of a device from MConfig.exe**", it will show the login interface.

Default Access

User: admin

Password: admin

Enter the user name and password, then click on the button "OK", it will show the status interface.

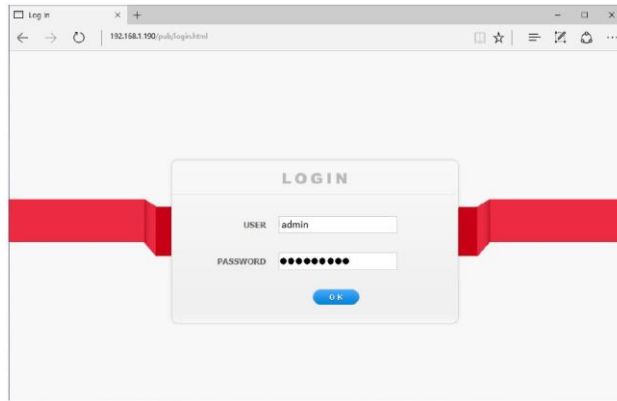


Figure 3 - Web Login Interface

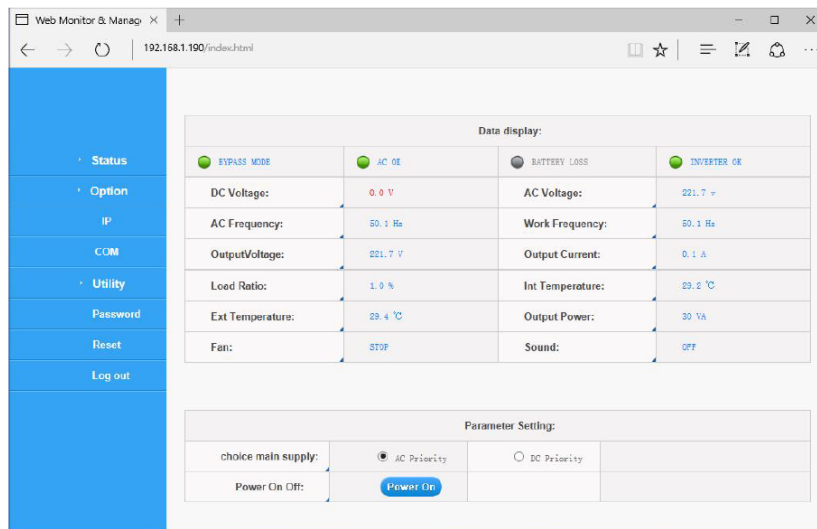


Figure 4 - Status Interface

In the status interface, if there is any abnormal data, it will be shown in red color. In the IP option interface, you can change the IP addresses of the LTI2 PRO.

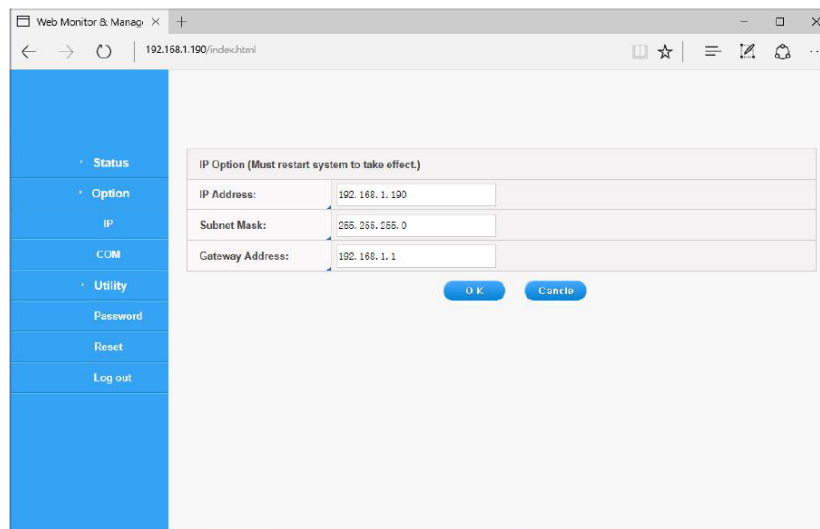


Figure 5 - IP Option Interface

In the COM option interface, you can change the COM parameter of the SNMP card inside LTI2 PRO, the default value is 9600, 1Bit stop bit, no parity. They are only internal parameters of LTI2 PRO, don't change them unless you get direct support of the La Marche service team.

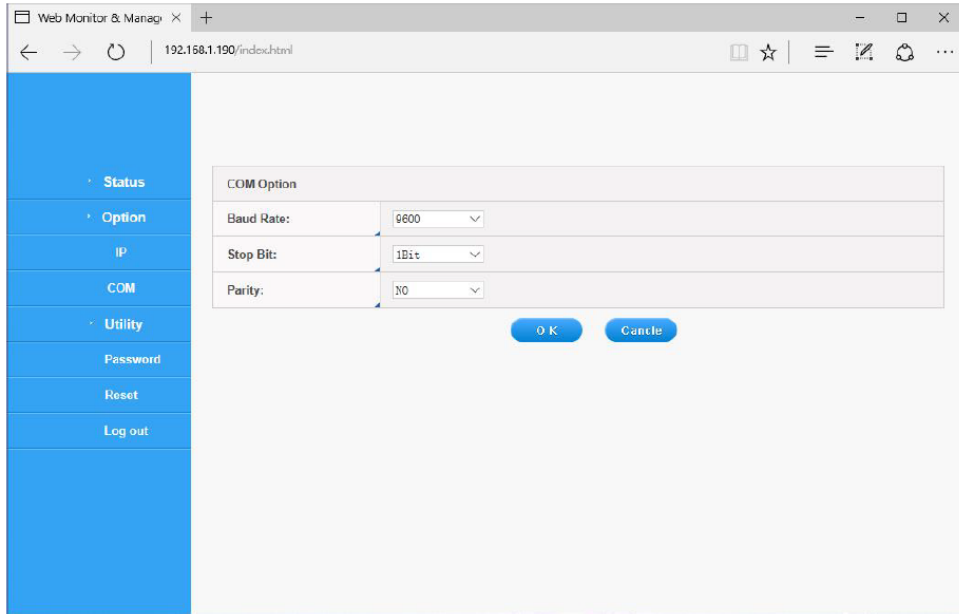


Figure 6 - COM Option Interface

In the password interface, you can change the current user name and password.

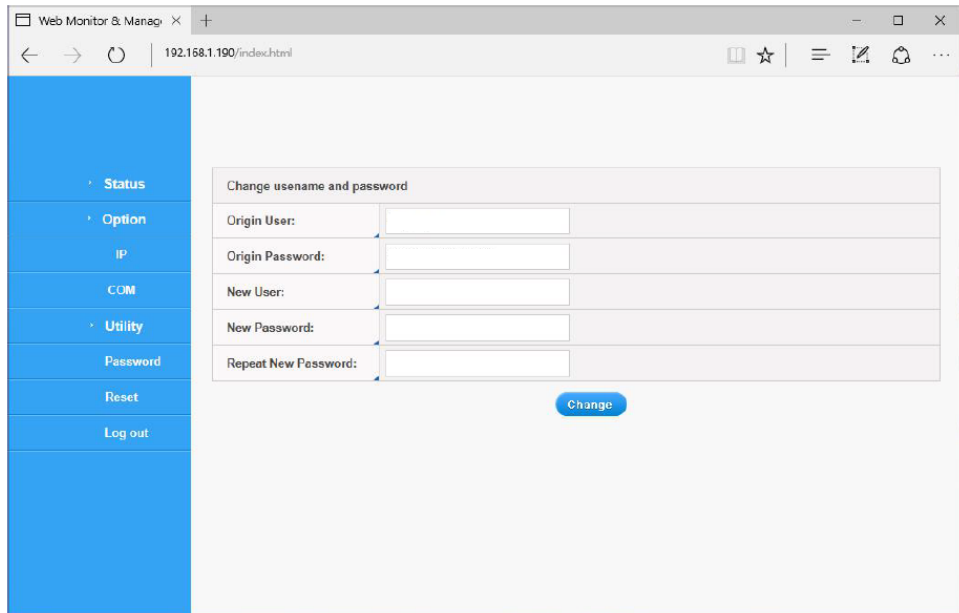


Figure 7 - Password Interface

In the reset interface, you can reset the system.

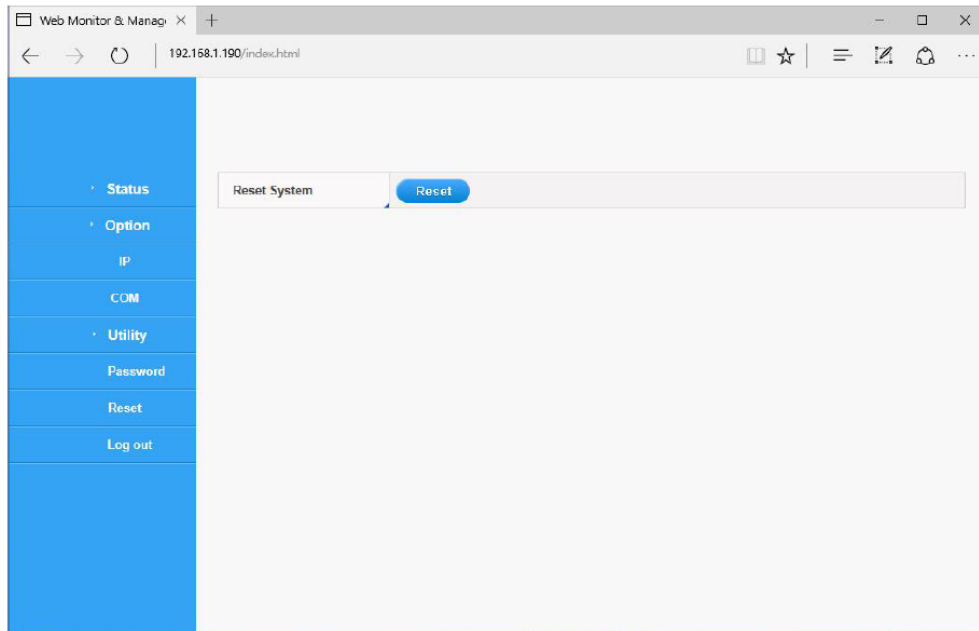


Figure 8 - Reset Interface

4.0 SNMP Management

LTI2 PRO supports SNMP V1, V2C, V3 protocol. You can use a MIB browser to view system status data and set configuration data.

4.2 Load MIB modules in MIB Browser

After installing the MIB Browser, load MIB files first. To get updated MIB files.

LIT2 PRO SNMP MIB file for SNMP Management can be Download from a CD drive provided with LTI2 PRO Inverter.

After loading the proper MIB file to suitable software, use the same device IP (check from MConfig.exe) to run the MIB file.

Appendix A: Document Control and Revision History

Part Number: 143693
Instruction Number: P25-LLTI2PROSNMP-1
Issue ECN: 22699

22699 - 10/20			